



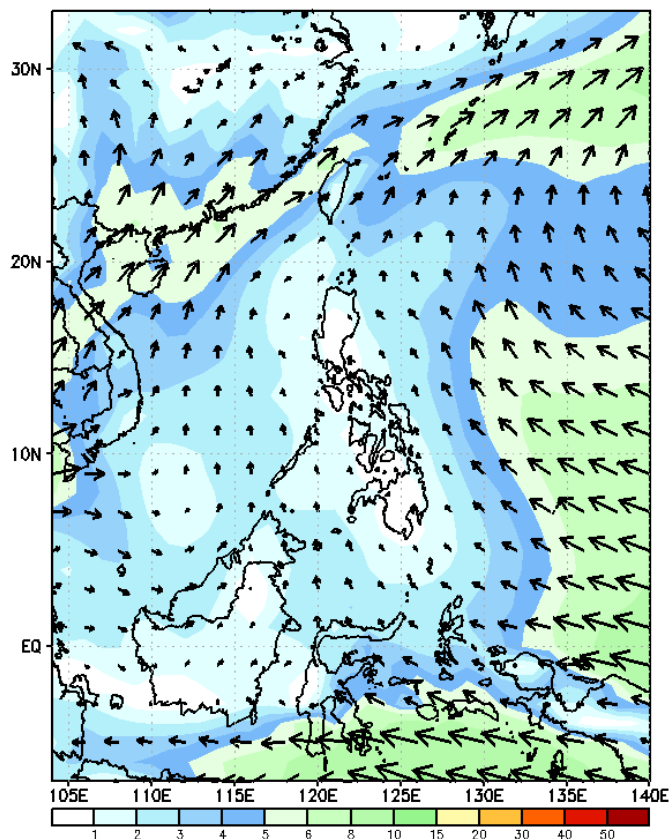
Week 1 & Week 2 Forecast for the Philippines using GEFS Model



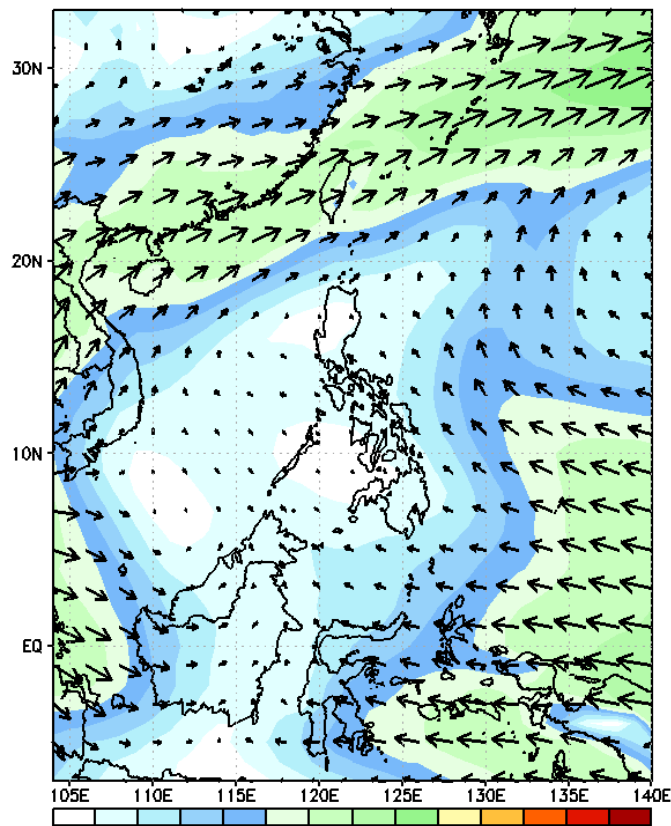
GEFS Week-1 Wind Forecasts:

Week 1: May 22-28, 2024

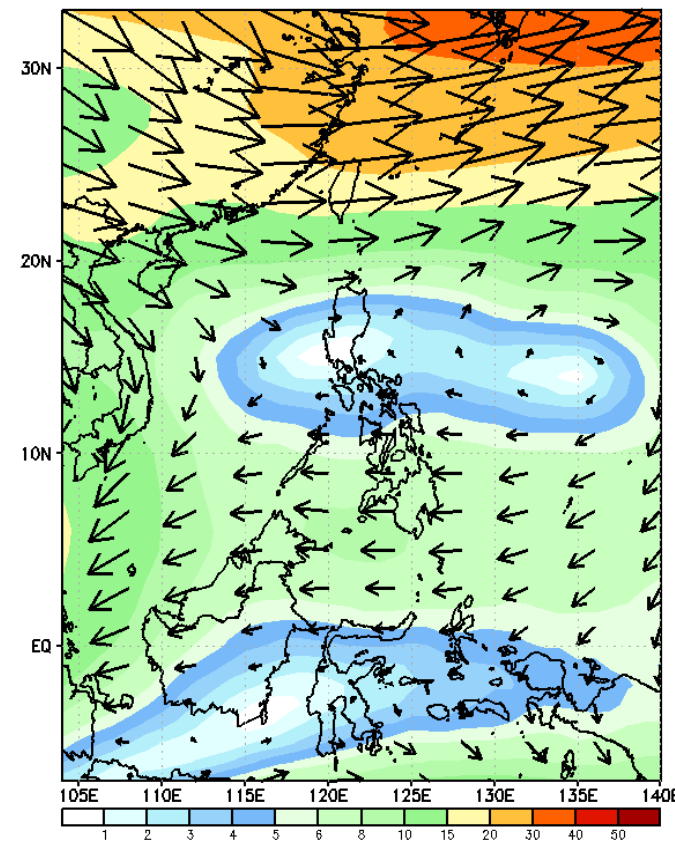
GEFS Week-1 850-hPa Wind Total
Valid: 20240522 - 20240528



GEFS Week-1 700-hPa Wind Total
Valid: 20240522 - 20240528

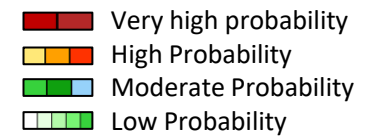


GEFS Week-1 200-hPa Wind Total
Valid: 20240522 - 20240528



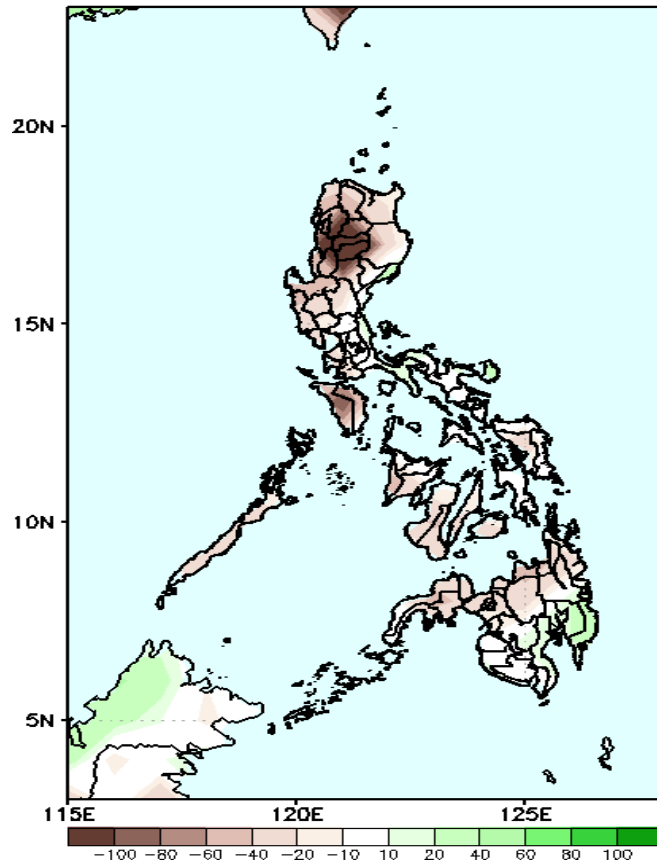
Easterlies continuously affect most parts of the country. Expect dry and warm days during the forecast period.

Precipitation Anomaly and Exceedance Probability > 25/50 mm



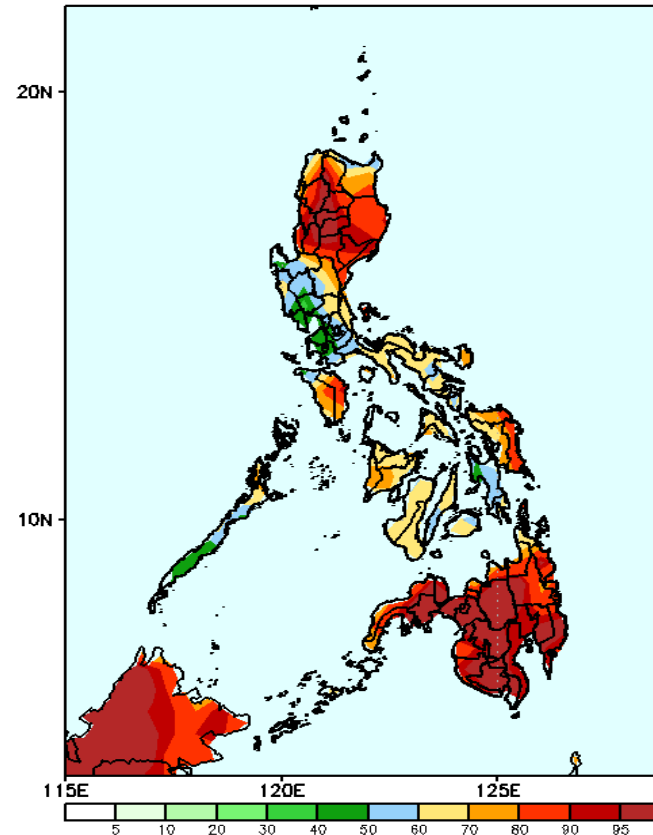
Week 1: May 22-28, 2024

GEFS Week-1 Precip Anomaly
Valid: 20240522 - 20240528



Rainfall deficit of up to 100mm is expected in most parts of CAR and Mindoro; 10-60mm for the rest of the country except for Davao region where 20mm increase in rainfall is most likely.

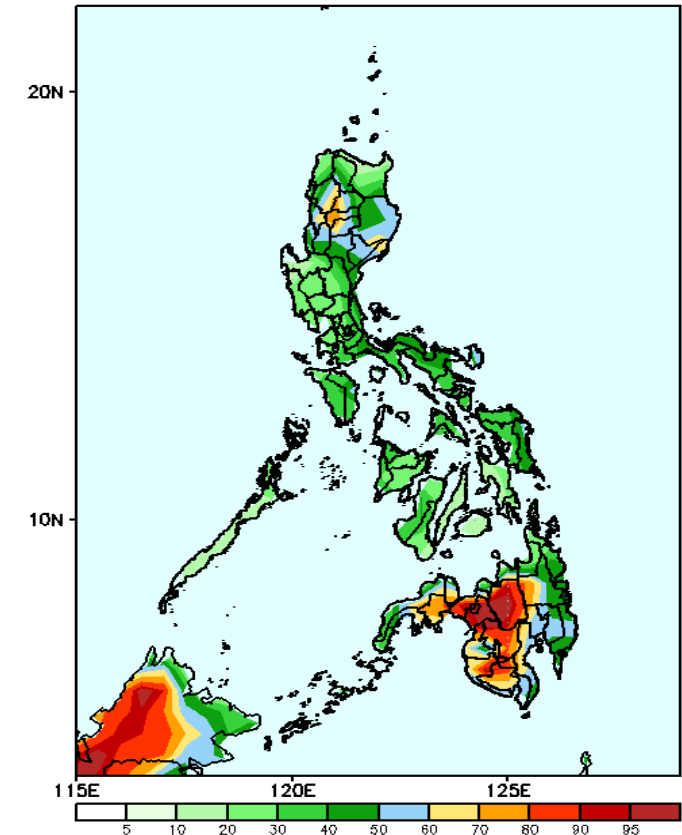
GEFS Week-1 Exceedance Prob. > 25mm
Valid: 20240522 - 20240528



Probability to Exceed 25mm

- High to very high over CAR and Mindanao;
- Moderate to high over the rest of the country.

GEFS Week-1 Exceedance Prob. > 50mm
Valid: 20240522 - 20240528

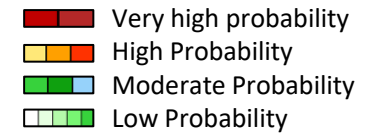


Probability to Exceed 50mm

- High to very high over Bukidnon and Lanao provinces;
- Moderate to high over CAR, Nueva Vizcaya, western Isabela, and the rest of Mindanao;
- Low to moderate over the rest of the country.

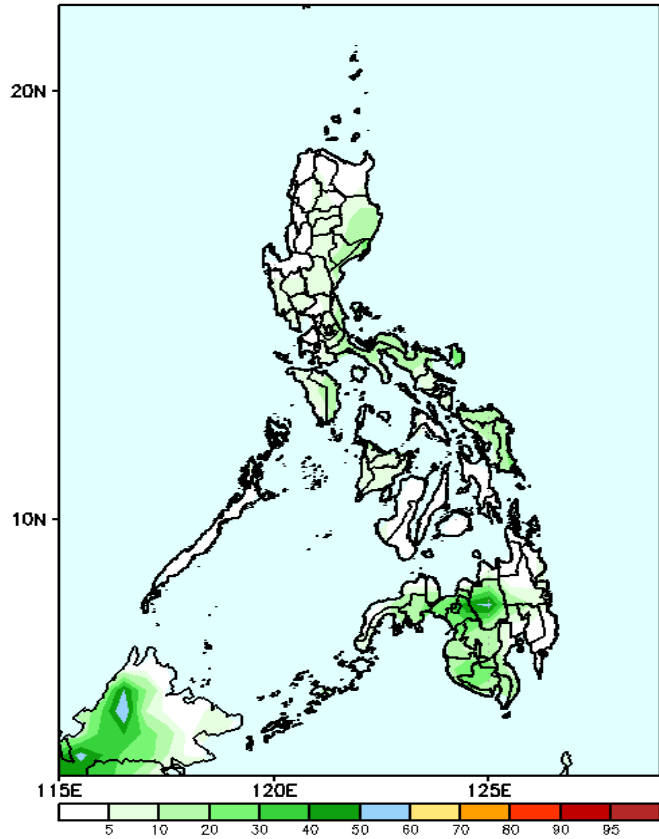


Exceedance Probability > 100/150/200 mm



Week 1: May 22-28, 2024

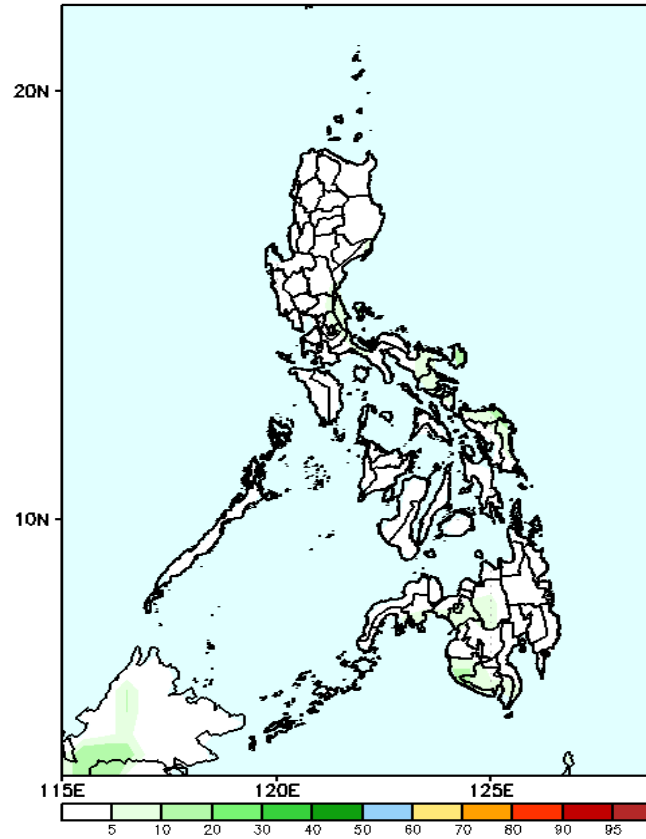
GEFS Week-1 Exceedance Prob. > 100mm
Valid: 20240522 - 20240528



Probability to Exceed 100mm

- Moderate to high over some areas in CAR;
- Low over the rest of the country.

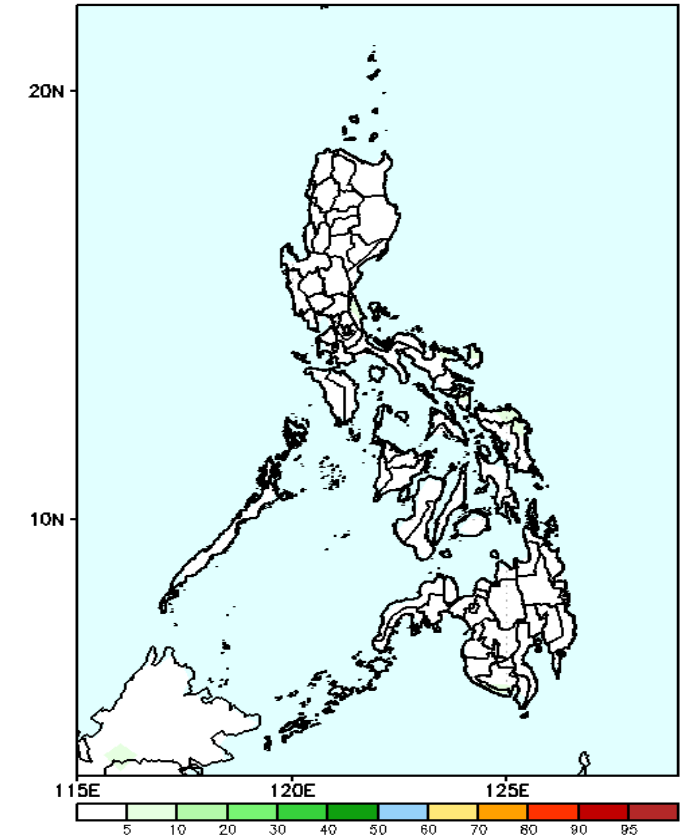
GEFS Week-1 Exceedance Prob. > 150mm
Valid: 20240522 - 20240528



Probability to Exceed 150mm

- Moderate to high over Ifugao and Nueva Vizcaya;
- Low over the rest of the country.

GEFS Week-1 Exceedance Prob. > 200mm
Valid: 20240522 - 20240528



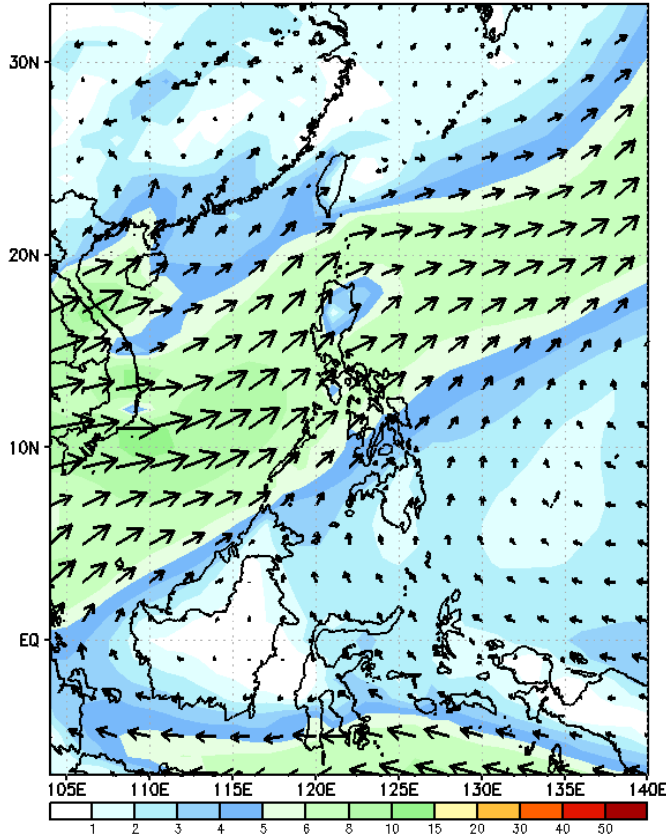
Probability to Exceed 200mm

- Low across the country.

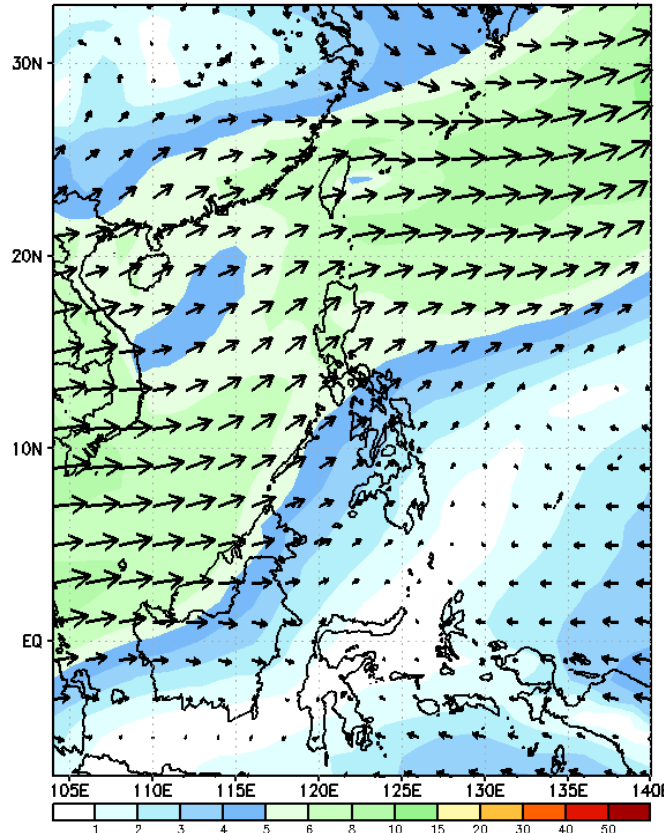
GEFS Week-2 Wind Forecasts:

Week 2: May 29- Jun 04, 2024

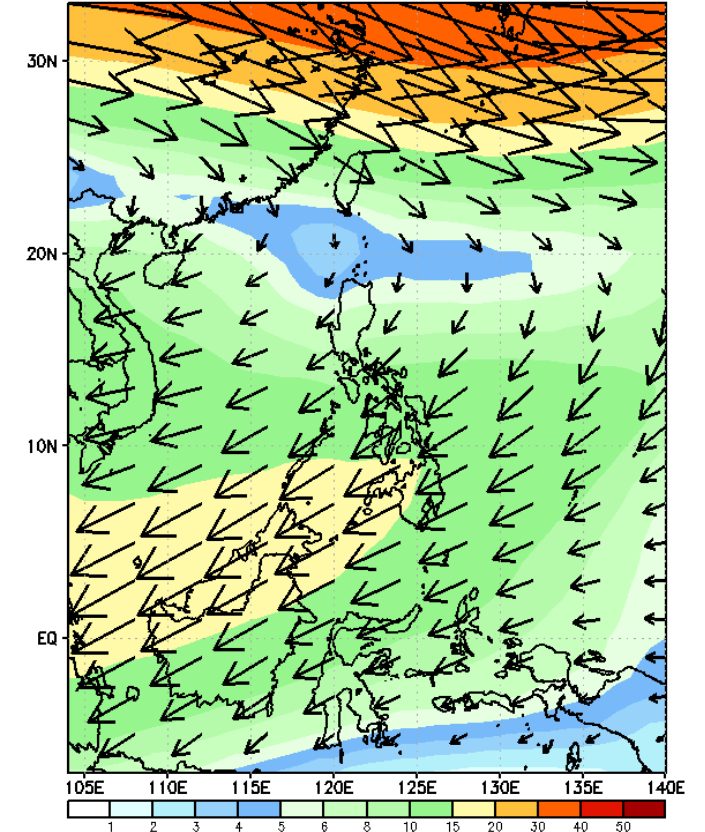
GEFS Week-2 850-hPa Wind Total
Valid: 20240529 - 20240604



GEFS Week-2 700-hPa Wind Total
Valid: 20240529 - 20240604

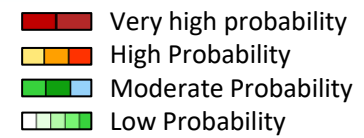


GEFS Week-2 200-hPa Wind Total
Valid: 20240529 - 20240604



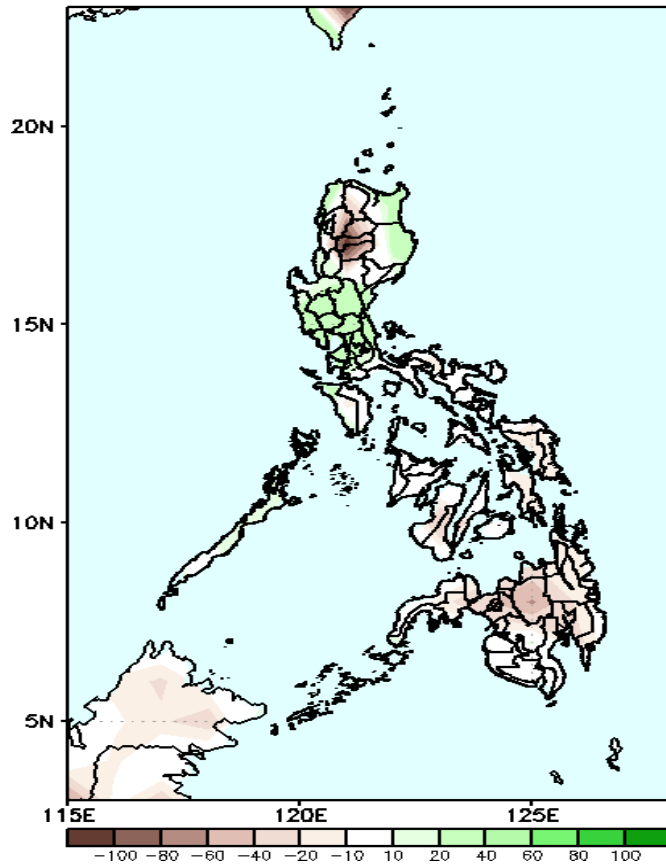
Southwest windflow will likely affect western Luzon. Easterlies will likely prevail in the remaining parts of the country. Expect dry and warm days during the forecast period.

Precipitation Anomaly and Exceedance Probability > 25/50 mm



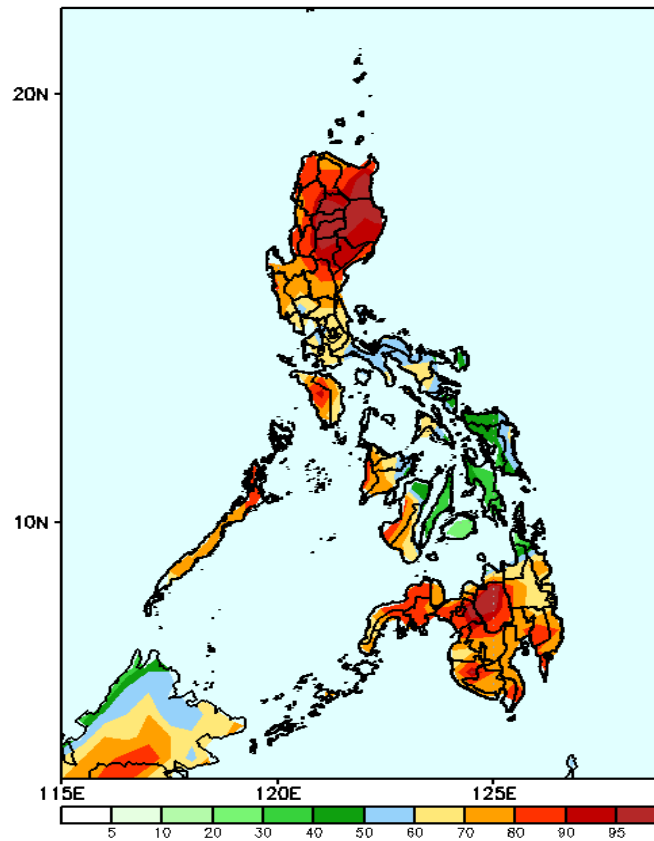
Week 2: May 29- Jun 04, 2024

GEFS Week-2 Precip Anomaly
Valid: 20240529 - 20240604



Rainfall deficit of 40-80mm is expected in CAR; 20-40mm for the rest of the country except Ilocos region and Central Luzon were 20-40mm of rainfall is most likely.

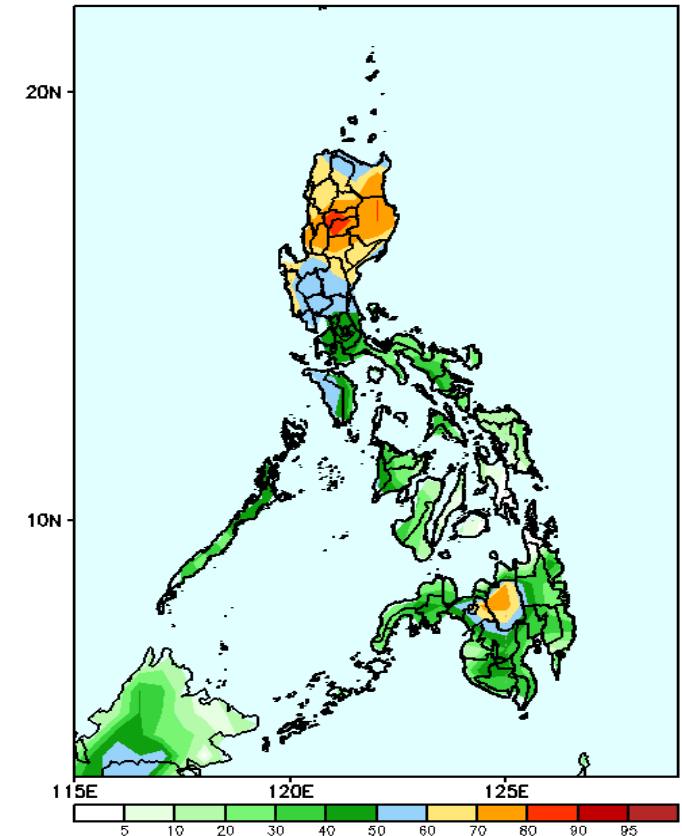
GEFS Week-2 Exceedance Prob. > 25mm
Valid: 20240529 - 20240604



Probability to Exceed 25mm

- High to very high over most parts of Luzon and Mindanao;
- Moderate to high over the rest of the country.

GEFS Week-2 Exceedance Prob. > 50mm
Valid: 20240529 - 20240604

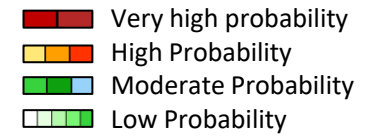


Probability to Exceed 50mm

- Moderate to high over most of Luzon, Bukidnon and Lanao provinces;
- Low to moderate over the rest of the country.

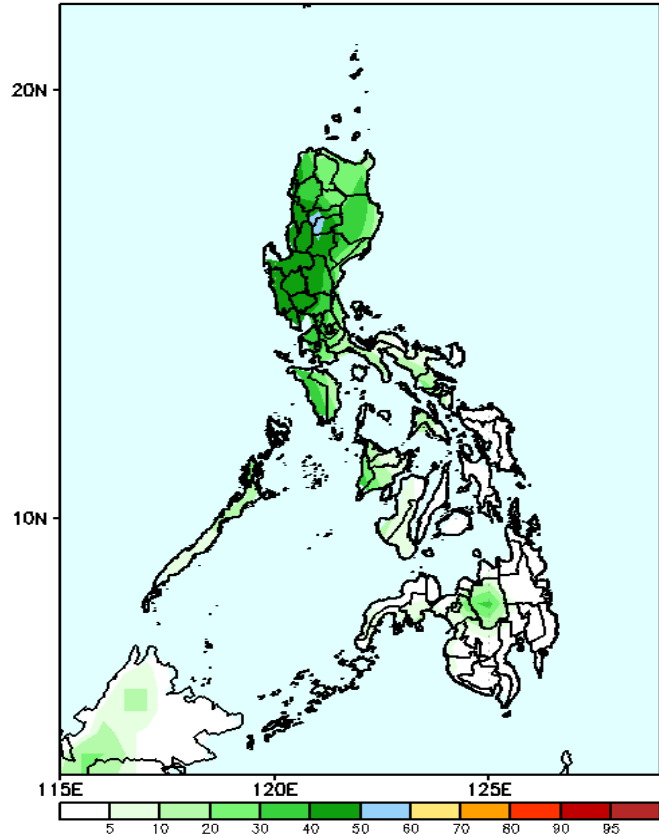


Exceedance Probability > 100/150/200 mm



Week 2: May 29- Jun 04, 2024

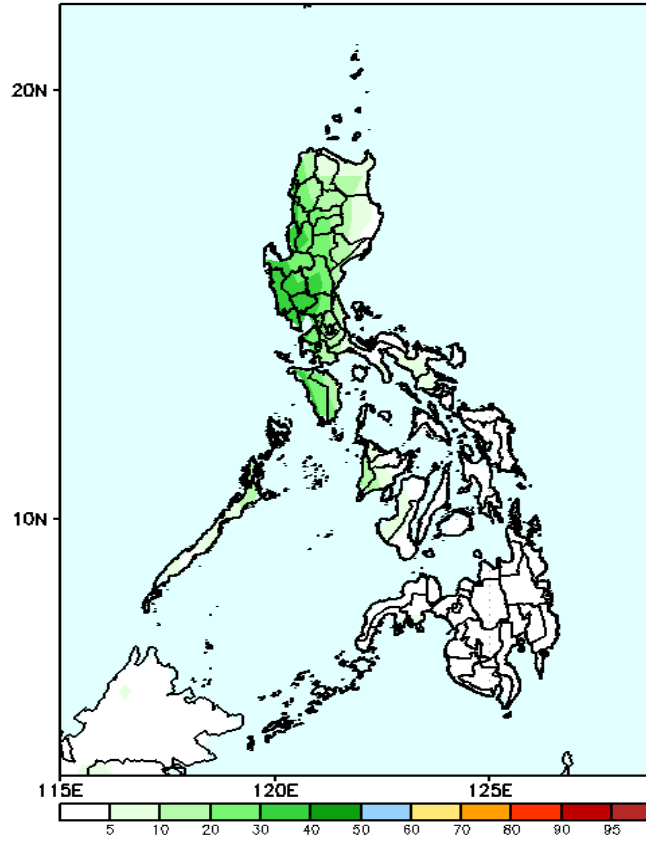
GEFS Week-2 Exceedance Prob. > 100mm
Valid: 20240529 - 20240604



Probability to Exceed 100mm

- Low moderate over Northern and Central Luzon;
- Low elsewhere.

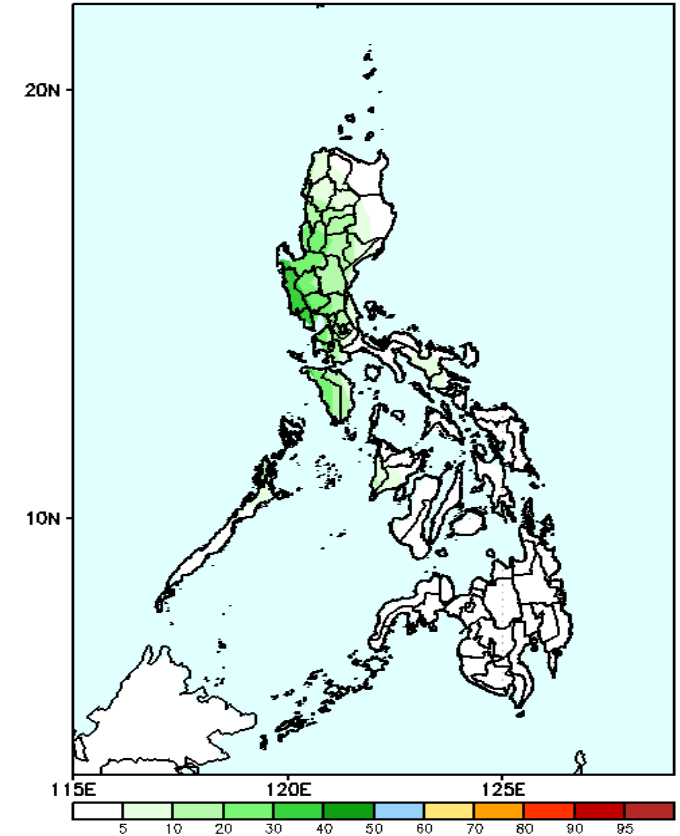
GEFS Week-2 Exceedance Prob. > 150mm
Valid: 20240529 - 20240604



Probability to Exceed 150mm

- Low across the country.

GEFS Week-2 Exceedance Prob. > 200mm
Valid: 20240529 - 20240604

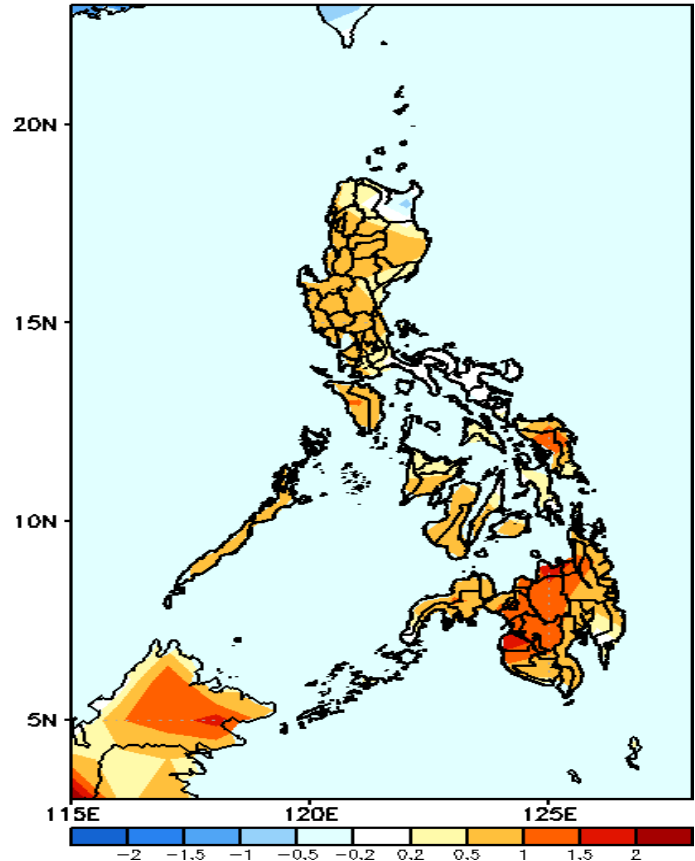


Probability to Exceed 200mm

- Low across the country.

GEFS Week-1 & 2 Forecasts: T2m Anomaly

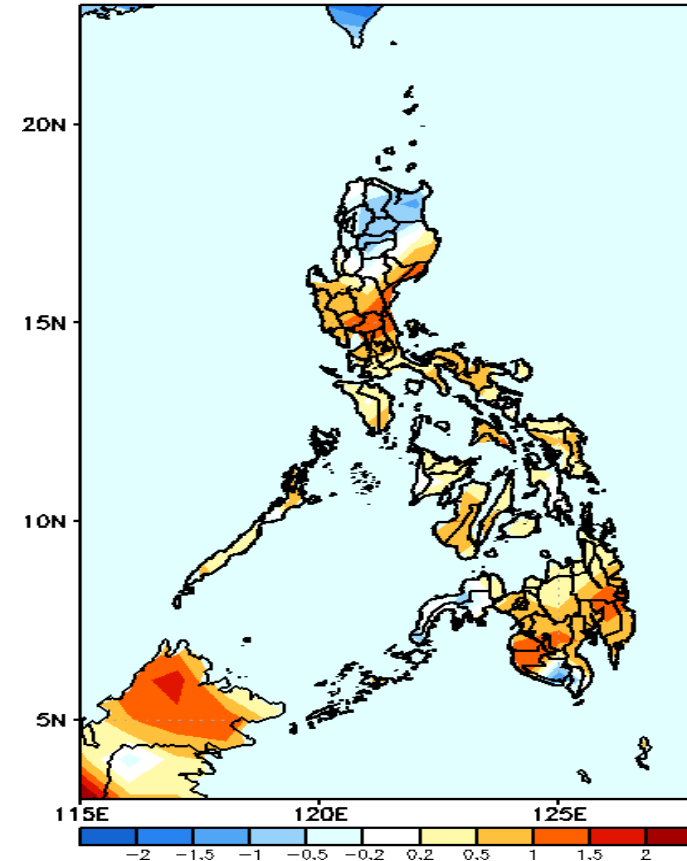
GEFS Week-1 T2m Anomaly
Valid: 20240522 - 20240528



2m Temperature Week 1: May 22-28, 2024

Slightly warmer to warmer than average surface air temperature will likely be experienced in most parts of the country.

GEFS Week-2 T2m Anomaly
Valid: 20240529 - 20240604



2m Temperature Week 2: May 29- Jun 04, 2024

Near to warmer than average surface air temperature will likely be experienced in most parts of the country except CAR and Cagayan were slightly cooler than average surface air temperature is likely.